

FEATURES

1. Enclosed Impeller

- Even wear components.
- Balanced hydraulic design for extended and even wear life of components.
- Wear plate, impeller and casing are made from 28% High Chrome.

2. Slurry Mechanical Seal

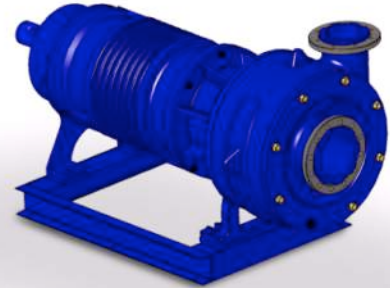
- Dual seals of Silicon Carbide vs. Silicon Carbide running without the need for flush water.
- The motor is further protected by a labyrinth seal and dual upper lip seals.

3. Premium Efficiency Motor

- Inverter-duty, air-filled, copper-wound motor.
- Class H insulation.
- Extended run dry capabilities when sized appropriately for the application.

4. No Packing or Shaft Sleeves

- Mechanical seal is self-contained requiring no adjustments or flush water for lubrication.



Mount horizontally outside the tank where there is a possibility of flooding or where packing problems or misalignment may occur.

SPECIFICATIONS

STANDARD

Horsepower	15 - 50 HP
Discharge Size	3" - 8"
Performance Range	
Capacity	250 - 6000 US GPM
Head	50' - 350' TH
Solids Handling	1" to 3-1/4" Particle Size
Motor Nomenclature	
Type / Speed / HZ	TENV Air-Filled / 890 to 1180 RPM / 60 HZ
Voltage / Phase	460, 575 V / 3 Phase
Service Factor	1.15
Insulation	Class H
Cable Length	33' Standard (Length option available)
Maximum Water Temperature	180° F
Operation Mode	Synchronous Speed or V.F.D.
Materials of Construction	
Casing	28% High Chrome 650+ Brinell Hardness
Impeller	28% High Chrome 650+ Brinell Hardness
Wear Plate	28% High Chrome 650+ Brinell Hardness
Shaft	416 Stainless Steel
Motor Housing	Cast Iron 3/8" Minimum Thickness
Fasteners	316 Stainless Steel

SPECIFICATIONS

STANDARD

Impeller Type	Enclosed
Mechanical Seal	
Upper Seat	Silicon Carbide
Upper Rotator	Silicon Carbide
Lower Seat	Silicon Carbide
Lower Rotator	Silicon Carbide
Elastomers	Viton
Labyrinth Seal	Cast Steel
Lubrication	Mobil / Synturion 6
Bearings	
Thrust	Double Angular Contact
Radial	Deep Groove Ball Bearing
Lubrication	Permanently Lubricated with Mobil SHC Polyrex 222
Accessories	Agitators / Discharge Hose / Variable Speed / Urethane Coating / Elbows in Steel or High Chrome / Control Panels / Moisture and Thermal Protection / Rafts