

DURABLE. RELIABLE. DEPENDABLE.



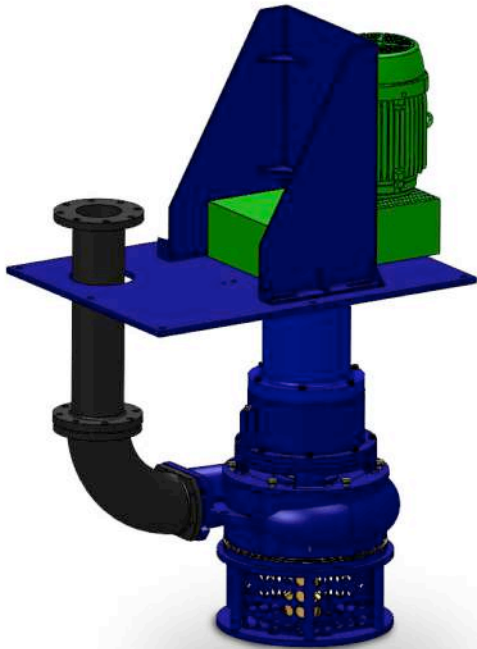
**HEAVY-DUTY BASE
MOUNTED BELT DRIVE LOW
HEAD SLURRY PUMP**

**BBLH
SERIES**

SPECIFICATIONS

FEATURES

- 1. Enclosed Impeller**
 - Balanced hydraulic design for extended life and even wear of components.
 - 28% High Chrome 650+ Brinell hardness assures long life of impeller, wear plate and casing.
- 2. Slurry Mechanical Seal**
 - Dual seals of Silicon Carbide vs. Silicon Carbide running without the need for flush water.
 - The motor is further protected by a labyrinth seal and a seal relief port.
- 3. Heavy-Duty Wash-Down Motor**
 - Inverter-duty TEFC, severe service, low voltage motor minimizes the cost of operation.



SPECIFICATIONS

Horsepower	15 - 150 HP
Discharge Size	3" - 8"
Performance Range	
Capacity	100 - 3400 US GPM
Head	50' - 140' TH
Solids Handling	1" to 2-1/2" Particle Size
Motor Nomenclature	
Type / Speed / HZ	TEFC / 350 to 1780 RPM / 60 HZ
Voltage / Phase	230, 460, 575 V / 3 Phase
Service Factor	1.15
Insulation	Class F
Maximum Water Temperature	200° F+
Operation Mode	Belt Driver and V.F.D.
Materials of Construction	
Casing	28% High Chrome 650+ Brinell Hardness
Impeller	28% High Chrome 650+ Brinell Hardness
Wear Plate	28% High Chrome 650+ Brinell Hardness
Shaft	416 Stainless Steel
Bearing Housing	Cast Steel
Fasteners	316 Stainless Steel
Impeller Type	Semi-Open
Mechanical Seal	
Upper Seat	Silicon Carbide
Upper Rotator	Silicon Carbide
Lower Seat	Silicon Carbide
Lower Rotator	Silicon Carbide
Elastomers	Viton
Labyrinth Seal	Cast Steel
Lubrication	Mobil / Synturion 6
Bearings	
Thrust	Double Angular Contact
Radial	Deep Groove Ball Bearing
Lubrication	Permanently Lubricated with Mobil SHC Polyrex 222
Accessories	Agitators / Discharge Hose / Variable Speed / Urethane Coating / Elbows in Steel or High Chrome / Control Panels / Moisture and Thermal Protection / Rafts

Pumps are available for 20' sumps. Permanently lubricated sealed bearings prevent minimum shaft deflections. Eliminates tail pipes and flush water.

